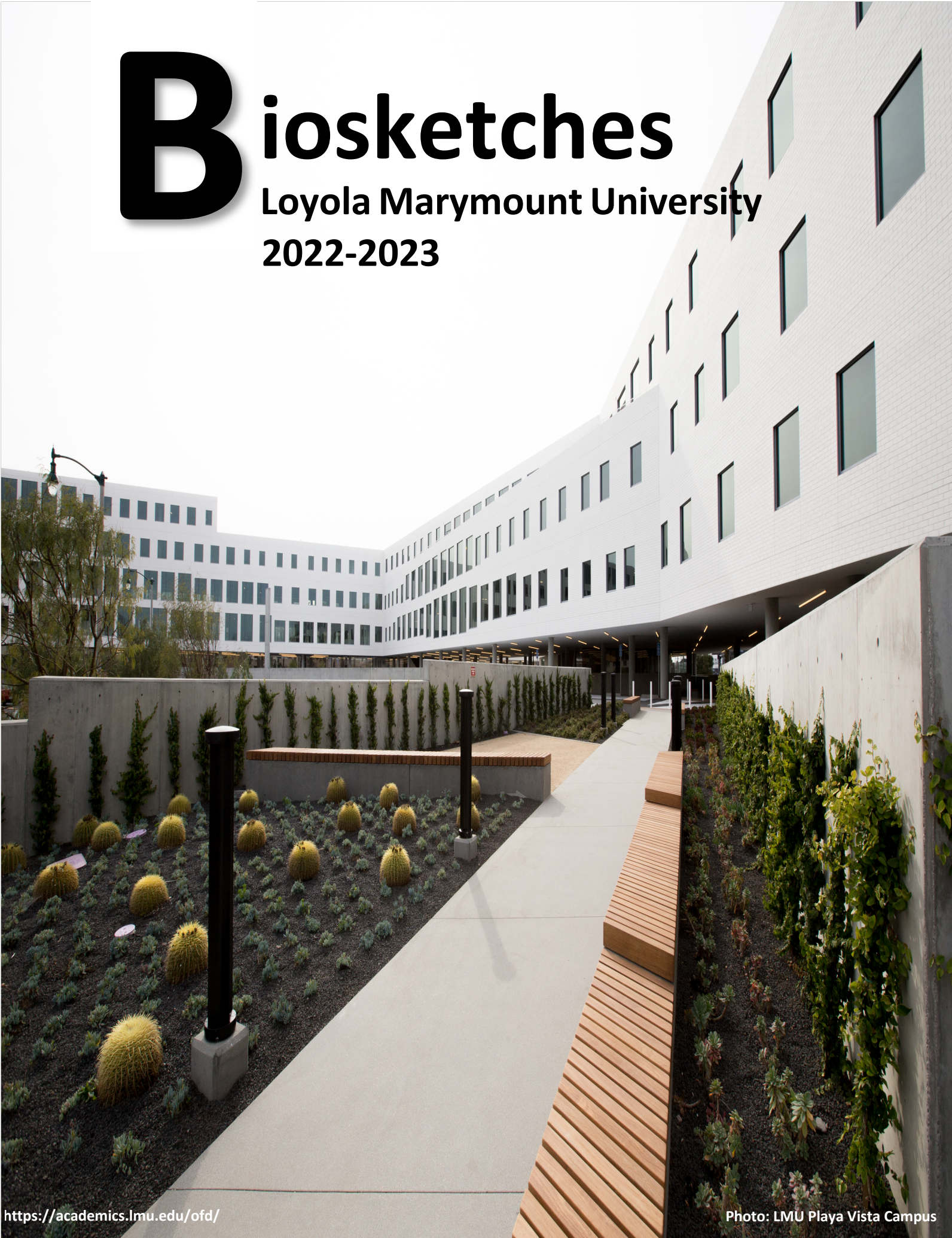


Biosketches

Loyola Marymount University
2022-2023



Loyola Marymount University

Welcome Message from our Provost

2022–2023

To the Loyola Marymount Community:

I am pleased to introduce our new faculty colleagues for the 2022-2023 academic year. This incredible group of tenure-line, visiting, and clinical faculty brings a breadth of expertise and life experience, and joins our community of outstanding teacher-scholars, dedicated staff, and ambitious students. They come to LMU at a time of renewal and growth. Thanks to the University's strong reputation, responsible fiscal management, generous donors, and sense of community, we are poised to emerge from the pandemic with renewed vigor and an exciting array of opportunities that will positively transform LMU. This includes "Creating the World We Want to Live In," LMU's new strategic plan and its five spotlight initiatives focused on (1) learning for justice, inclusion, and transformation, (2) integrative and interdisciplinary thinking, (3) personalized connections, (4) discovery and innovation in graduate and professional education, and (5) expanding access to an LMU education.



This academic year marks the third year of the LMU Anti-Racism Project, which invites and challenges members of the LMU community to engage in a collective commitment to anti-racism at multiple levels. Faculty and staff are encouraged to take part in or utilize the many resources that are available to help advance our efforts in becoming an anti-racist institution, including Restorative Practices Training, Implicit Bias Workshops, Cultural Consciousness Conversations, and more.

Please join me in welcoming our new faculty and helping them feel at home on our campus by inviting them into our offices, celebrating their academic achievements, and helping them understand our mission as we encourage learning, educate the whole person, and lead lives in the service of faith and the promotion of justice.

I look forward to working together to make the 2022-2023 academic year a success.

Sincerely,

Thomas Poon, Ph.D.
Executive Vice President and Provost

A handwritten signature in black ink, appearing to read "Thomas Poon". The signature is fluid and cursive, written in a professional style.

NEW FACULTY 2022-2023: BIOSKETCHES

Tenure-Line Faculty Bellarmine College of Liberal Arts



JALYLAH BURRELL
Assistant Professor

African American Studies

Jalylah Burrell earned her B.A. in English from Spelman College and an M.A. in Africana Studies from New

York University. She received her Ph.D. in American Studies and African American Studies from Yale University and most recently taught at San José State University where she was an Assistant Professor of African American Studies. Her scholarship was previously supported by postdoctoral fellowships at DePaul University's African and Black Diaspora Department and Rice University's Center for the Study of Women, Gender, and Sexuality. Her research and teaching are focused on African Diasporic literature and popular culture and enhanced by experience as a multiplatform storyteller—pop culture critic, digital producer, oral historian, and deejay. Praised by hip hop magazine XXL for her "insightful, intellectual dissection of hip-hop, feminism and Black culture," she has taught and written extensively about Black popular culture. Her current book project is tentatively titled

"Capacity for Laughter: Black Women and the American Comedic Tradition.



NATHAN CHAN

Assistant Professor

Political Science and International Relations

Nathan Chan is an Assistant Professor of Political Science at

Loyola Marymount University. He specializes in American Politics and Research Methods. He has published or has forthcoming journal articles in *Perspectives on Politics*, *Political Behavior*, and *Political Research Quarterly* among others and has featured his research in the *Washington Post* and the *Brookings Institute*. He teaches courses in race, ethnicity, and politics; political behavior; and empirical approaches in political science. Nathan is from Eagle Rock, a neighborhood in Northeast LA. In his spare time, he enjoys traveling, hiking, and concerts and live music.



HEANGJIN PARK

Assistant Professor

Asian & Asian American Studies

Professor Park received his Ph.D. in Anthropology from the University of Chicago, where he

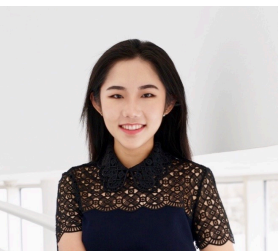
was a Postdoctoral Teaching Fellow in the Department of Anthropology and the College. He earned his B.A. and M.A. in Anthropology from Seoul National University, South Korea. Professor Park's research and teaching interests are broadly concerned with the global circulation of commodities, industrial production and distribution of food, and nationalism in contemporary Northeast Asia. Based on his ethnographic research in a kimchi company in China, his book project *Manufacturing "Korea" in China* examines transborder mobilities and nationalist worldviews across South Korea and China. As a visual anthropologist, he combines photography, ethnographic film, and media analysis to explore the aesthetic configuration of cultures and nations, such as in his photographic article on *Anthropology and Photography* and his documentary *Chejian* (post-production). His research has been supported by Wenner-Gren Foundation for

Anthropological Research, Paulson Institute, and University of Chicago Center in Beijing. Professor Park is also participating in the collaborative project “Logistics in the Making of Mobile Worlds,” funded by the Neubauer Collegium for Culture and Society.



SAQIB HUSSAIN
Assistant Professor
Theological Studies

Professor Saqib Hussain received his D.Phil. in Oriental Studies and his M.Phil. in Islamic Studies and History at the University of Oxford. His research focusses on the Qur’an’s literary features, and its engagement with the communities and ideas of late antiquity, especially the Jewish and Christian traditions. His D.Phil. was an examination of the Qur’an’s engagement with Jewish and Christian attitudes to law and morality. He has publications on the Qur’an and gender, the Qur’an and the apocalyptic tradition, and on the Qur’an’s portrayal of various biblical figures, including Jesus (in a forthcoming volume).



FAN LIANG
Assistant Professor
Economics

Professor Fan Liang received her B.A. in economics from DePaul University and her M.A. in economics from the University of Iowa. She earned her Ph.D. in Economics from the University of Georgia. In her research, she primarily studies asset markets with search and information frictions.



CARLA MORENO
Assistant Professor
Economics

Carla Moreno received her B.A. in Economics from the Universidad del Pacifico (Lima, Peru) and M.Sc. at Emory University. She received her Ph.D. in

Economics from Emory University. In addition to her academic accomplishments, she worked in the Congress of the Republic of Peru as an economic assistant and at the Federal Reserve Bank of Atlanta - Americas Center as a research assistant. She co-authored a book, “El porvenir de la vejez: demografía, empleo y ahorro”, analyzing Peru’s pension system (2018). Professor Moreno’s research focuses on Labor Macroeconomics, Savings and Retirement, and Social Security Systems.



ALI OLOMI
Assistant Professor
History

Professor Ali A Olomi earned his B.A. at UCLA and his M.A. and Ph.D. at UCI. Prior to joining LMU as Assistant Professor in the Department of History, he was tenure-track faculty at Pennsylvania State University Abington and is an Affiliated Scholar with the Rutgers Center for Security, Race, and Rights. Dr. Olomi is a historian of medieval Islamic thought and its reception in modern Middle East political movements. He examines the entanglements of science, religion, and imperial imagination in the 10th-14th century Perso-Islamic world and way premodern formations were redeployed in discourses of modernity in 19th century pan-Islamism. His work has been supported by fellowships and grants from the Samuel Jordan Center for Persian Studies and the University of California Humanities Commons. He is author of the book chapters “Women and Education in Islam,” “Jinn in the Qur’an,” and in addition to his academic work, has written for the *Washington Post*, *Public Books*, and elsewhere as a public intellectual.



ADAM THAL
Assistant Professor
Political Science and International Relations

Professor Adam Thal earned his Ph.D. in Political Science from Princeton University and his B.A. from the University of Wisconsin-Madison. Prior to joining LMU, Professor Thal was a postdoc at Yale University and a research scientist at Meta. His

research focuses on topics including American politics, political behavior, social media, and inequality. His dissertation on the politics of rich Americans was chosen as the best dissertation on political psychology by the American Political Science Association in 2018.

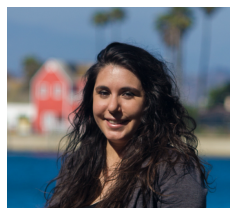


REBECCA WALL

**Assistant Professor
History**

Professor Rebecca Wall earned her Ph.D. in History from Stanford University. Prior to coming to LMU, she was Visiting Assistant

Professor of History at Hamilton College. In her book manuscript, Wall considers how West African nations balanced individual sovereignty with need to jointly manage a critical water resource, the Senegal River. She has also begun a project on the long-term relationship between climate change and migration in the Western Sahel. Wall is passionate about interdisciplinary research, and she co-directs a digital history project, the Senegal Liberations Project, with colleagues at Stanford University and the National Archives of Senegal. Wall's research has been supported by the Fulbright-Hays DDRA, Social Science Research Council, West African Research Association, and the National Socio-Environmental Synthesis Center, and she has published in *African Studies Review*, *Esclavages & Post-Esclavages*, and *Environmental Science & Policy*.



CHELA WILLEY

**Assistant Professor
Psychological Science**

Professor Willey earned her B.A. in Psychology with a second major in Justice Studies

& Criminology and her M.A. in Experimental Psychology from CSU San Marcos. She received her Ph.D. in Psychology from UCLA with a specialization in Cognitive Psychology. Her main research focus is on perceptual, cognitive, and neurological mechanisms that underlie bodily awareness, self-motion, and self-orientation in 3D

gravitational space. Along with conducting basic research of these mechanisms, she also applies these findings to further understand how they contribute to vestibular and motion-related disorders such as motion sickness, vertigo, dystonia, and acrophobia. She utilizes a variety of methods to study these phenomena including psychophysics, perceptual learning paradigms, virtual reality, eye-tracking, and neuromodulation. She continues to collaborate with co-authors and colleagues from UCLA on these investigations, including upcoming articles that focus on cultural differences in the perception of visual illusions.



TIMOTHY WILLIAMSON

**Assistant Professor
Psychological Science**

Professor Timothy Williamson is an Assistant Professor in the Department of Psychological Science. He received a B.A. in Psychology from Pitzer College,

an MPH from Claremont Graduate University, and a Ph.D. in Clinical Health Psychology from the University of California, Los Angeles. Prior to joining LMU, he completed his clinical training at Weill Cornell Medicine/New York-Presbyterian Hospital and pursued additional postdoctoral training in psychosocial oncology at Memorial Sloan Kettering Cancer Center. In his research, Professor Williamson studies relationships between stigma, stress, and health. He uses qualitative and quantitative methods to understand how some psychological and social factors (e.g., stigma, social adversity) can increase risk for negative health outcomes, whereas others (e.g., self-compassion, mindfulness) can promote resilience in the face of profoundly stressful experiences, including chronic diseases such as cancer. He has focused his recent work on understanding and reducing the stigma experienced by adults with lung cancer. His research has been supported by the National Cancer Institute, the American Lung Association, and the Association for Psychological Science.

College of Business Administration



HUAYU (JADE) CHEN
Assistant Professor
Accounting

Professor Jade Chen has a Bachelor of Economics in Public Finance from Shanghai

University of Finance and Economics, and a Master of Science in Accounting from Michigan State University. She earned her Ph.D. in accounting from the University of Arizona. Her primary research interest is in the area of auditing, with a focus on various factors that affect auditors' ability to deliver high audit quality, such as audit firm internal governance and human capital management. She also works on research at the intersection of auditing and financial accounting such as the role of auditing and audit regulation in shaping firms' disclosure decisions. Her research applies theories and perspectives from other disciplines such as spatial economics and labor economics to auditing settings, with the objective of advancing the understanding of the audit industry. Her solo-authored paper "When Employees Go to Court: Audit Office Labor Market Reputation and Audit Quality" was recognized as the Best Archival Paper by the Auditing Midyear Meeting 2022.



BASSAM FARAH
Assistant Professor
Management & Leadership

Bassam Farah is a legally blind Professor of Strategy and International Business. He received his B.A. in

Psychology and Master's in Business Administration from the American University of Beirut (AUB), his Master's in Psychology and Ph.D. in Psychology (on Leadership) from the Lebanese University, and his Ph.D. in Business Administration with a specialization in Strategy and International Business (on International

Corporate Governance) from the Ivey Business School at Western University in Canada. Professor Farah was an Assistant Professor of Strategy and International Business and got promoted to Associate Professor with Tenure at the Olayan School of Business at AUB just before joining LMU.

His research focuses on (international) corporate governance, (global) leadership, and (dis)abilities and has been published in quality journals such as Leadership Quarterly, Journal of World Business, Corporate Governance: An International Review, Management Research Review, Journal of Strategy and Management, and AACSB Insights. He has received multiple prestigious national and international awards and grants for his research, teaching, and service [e.g., Research: Several Academy of Management (AOM) Best Paper Awards and Best Paper Proceedings; Multiple internal and external grants; Teaching: Most Inspirational, Most Supportive, and Most Caring Professor Awards; European Foundation for Management Development (EFMD) Best Case Award; Service: AOM and Academy of International Business (AIB) Best Reviewer Awards; etc.]. He is also an experienced leadership coach and (dis)ability activist.



MELISSA FITZPATRICK
Assistant Professor
Management (CEB)

Professor Melissa Fitzpatrick received her Ph.D. in Philosophy from Boston College, just before

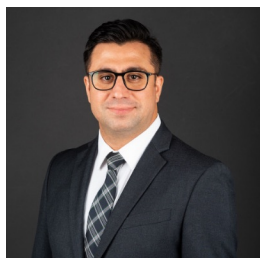
starting her previous position as an Assistant Professor of Practice in ethics in Boston College's Carroll School of Management. Her role in the Carroll School was to introduce incoming students to philosophy as a lived practice, while guiding them toward an understanding of business as a force for good and vehicle for change. Prior to earning her doctorate, Melissa received an M.A. in Philosophy from Loyola Marymount University, and a B.S. in Communication from Boston University. She is the co-author of *Radical Hospitality: From Thought to Action*; chief among her research interests is

understanding how to foster a more sustainable community with the other-than-human world, and, as a vital foundation for that, how to overcome instrumental values. Her work in normative ethics focuses on the intersection of post-Kantian Continental philosophy and contemporary virtue ethics, arguing for the significance of "self-disruption" in ethical development. Melissa has also done integrated teaching, research, and community outreach in pre-college philosophy in the Mississippi Delta and on the Mexican-American border in El Paso, Texas.



MYOUNGHEE (CHLOE) MOON
Assistant Professor
Marketing and Business Law
Professor Myounghee (Chloe) Moon earned her Ph.D. in Marketing at University of

California, Riverside (UCR). She received her B.B.A. in Business Administration from Ewha Womans University, South Korea, and her M.S. degree in Integrated Marketing Communications from Northwestern University. Professor Moon's research has focused on modeling the impact of new technology-enabled channels on product manufacturers and consumers, applying industrial organization and econometrics methods. Her doctoral research examined the effect of ride-sharing platforms on automobile manufacturers and consumer's vehicle purchase decisions. Myounghee taught database marketing and services marketing at UCR before joining LMU. Prior to her academic career, she worked as a marketing manager for an e-commerce company in South Korea.



SINA ZARE
Assistant Professor
Information Systems and Business Analytics
Professor Sina Zare earned his Ph.D. in Management Science from the University

of Texas at Arlington (UTA). He received his M.Sc. degree in Production Engineering and

Management from the Royal Institute of Technology (KTH), Sweden. Prior to joining Loyola Marymount University, Professor Zare was Assistant Professor of Supply Chain and Operations Management at Neil Griffin College of Business, Arkansas State University. He teaches various undergraduate and graduate-level courses, including Business Analytics, Supply Chain Management, and Operations Management. Professor Zare's primary research encompasses topics in behavioral operations management, decision-making strategies, crowdsourcing, and the application of Blockchain in operations and supply chain management. He has extensive international work experience involving the application of data-driven analyses and quantitative techniques to the business sector. Prior to his work at Arkansas State University, he served as SAP University Alliances Faculty Coordinator and lecturer at the University of Texas at Arlington (UTA). Moreover, his professional experience includes consulting for various organizations, including tech companies, entrepreneurial start-ups, and non-profits.

College of Communication and Fine Arts



PALOMA BARHAUGH-BORDAS
Assistant Professor
Art and Art History
Professor Paloma Barhaugh-Bordas (she + they) is an artist, activist and educator who uses a connection-based approach to build community through

their creative and scholarly practice. Barhaugh-Bordas earned a B.A. in Studio Arts with distinction from Carleton College and an M.F.A. in Print Media from Rhode Island School of Design. Their solo exhibition at the Handwerker Gallery in Ithaca, NY, explored the notion of becoming local by working with non-native and invasive plants using textiles, sculpture, print, and a 60-foot hand-knotted net.

**DIVINE KWASI GBAGBO****Assistant Professor
Music**

Professor Divine Kwasi Gbagbo earned his Ph.D. in Interdisciplinary Arts (Fine Arts), with specialized focus in Ethnomusicology and Musicology, from Ohio University. His published Ph.D. dissertation entitled, "Rites, Recreation, and Rulership: Christianity and Ewe Music of Ghana" examined the understudied relationship between Christianity and Ghanaian Ewe musical practices. He received a Master's Degree in Ethnomusicology from Kent State University and a Bachelor of Education degree in Music and Ghanaian Languages (Ewe) Education at the University College of Education in Winneba, Ghana. Professor Gbagbo's varied levels of expertise in scholarship, research, teaching, and performance has given him more than two decades of teaching experience in world music cultures, African and African American music, music history, African studies, and interdisciplinary arts in different cultural contexts. His research interests include the postcolonial influence and its ramifications on musical traditions of the Ewe of Ghana and Togo. He is also interested in the way African music performance in the twenty-first century contributes to narratives and theorizations of continuity and change in the diaspora. As a composer of choral art music, Professor Gbagbo blends indigenous Ghanaian-Ewe compositional styles with the acquired Western conventional composition techniques.

**SERGIO JUAREZ****Assistant Professor
Communication Studies**

Professor Sergio Fernando Juárez earned his Ph.D. in Communication Studies

from the University of Denver. Prior to coming

to LMU, he was a tenure-track faculty member at California State University Fresno where he also served as Graduate Teaching Coordinator. He works on developing equitable pedagogical practices within and outside classroom spaces. Professor Juárez's areas of research include critical pedagogies within the field of communication and development of equitable educational practices within institutions to better value multiple forms of intelligence and knowledge. Professor Juárez is the author of "Chicana Feminist Ontologies and the Social Process of Constructing Knowledge" published in the journal the Review of Communication (2019). He is the lead editor of a forthcoming edited volume titled Migrant World Making, in review with Michigan State University Press. In 2021, Professor Juárez received the Activism and Social Justice Pedagogy Award by the Social Justice & Activism Division of the National Communication Association. Professor Juárez is the incoming Associate Editor of the National Communication Association peer-reviewed journal Communication Education.

Frank R. Seaver College of Science and Engineering

**RYAN HUNT****Assistant Professor
Chemistry and Biochemistry**

Professor Jonathan Ryan Hunt earned his B.S. in Chemistry with a minor in Mathematics from Centre College in Danville,

Kentucky. He received his Ph.D. in Physical Chemistry from the University of Southern California, where he used ultrafast spectroscopic methods to study the kinetics of excited state proton- and electron-transfer reactions. His graduate research was partially funded by the National Science Foundation Graduate Research Fellowship Program (NSF GRFP). While at USC, Ryan taught General Chemistry through the Burg Teaching Fellowship and learned

teaching methodologies at the CET Future Faculty Training Institute. Recently, Ryan was a lecturer of Thermodynamics at the University of California, Los Angeles. While at UCLA, he served as a visiting scholar, studying the thermoelectric effect in polymers. Ryan is most proud of his publication “Photodriven Deprotonation of Alcohols by a Quinoline Photobase”, published in the Journal of Physical Chemistry A. He will be doing similar research with students at LMU.



ROBERT MUSCI
Assistant Professor
Health and Human Sciences
Professor Robert Musci received his B.S. in Health and Exercise Science at Wake Forest University and

M.S. in Health and Exercise Science at Colorado State University. In 2016, he completed a Fulbright fellowship in Venice, Italy studying the influence of the urban environment on older adult health and mobility. He earned his Ph.D. in Human Bioenergetics at Colorado State University where he studied the mechanisms of aging and chronic diseases such as muscle wasting. Afterward, Professor Musci was a postdoctoral research fellow at the University of Utah studying skeletal muscle regeneration. His research primarily focuses on the role of mitochondrial function, whole-body metabolism, and protein turnover in the context of health, aging, and chronic disease.



CAIO SOUSA
Assistant Professor
Health and Human Sciences
Professor Caio Victor Sousa received his M.S. and Ph.D. in Physical Education and Exercise Science at Catholic

University of Brasilia, Brazil. He earned his Ph.D. studying aging biomarkers in master athletes and non-athletes. In 2018, he completed a fellowship in the Miller School of Medicine, University of Miami, studying the influence of a community-based exercise program on depression scores in people living with HIV. Afterward, Professor Sousa

was a Postdoctoral Research Associate at Northeastern University, Boston, studying the impact of active video games on physical activity behavior, body composition, and cognitive parameters in children. His research primarily focuses on exploring how lifestyle influences aging biomarkers, modulating the risk to age-related diseases. Part of his research also explores the interaction between age, training level, physiological parameters, gender, and performance in endurance sports.



LE WANG
Assistant Professor
Mathematics
Professor Le Wang earned her Ph.D. in Biostatistics from the University of Pennsylvania. She received her M.S. degrees in

Applied Statistics and Biology from Villanova University, and a B.S. in Biological Sciences from Zhejiang University, China. Prior to joining LMU, Professor Wang was an Assistant Professor of Statistics at Villanova University. Her research interests include designs and statistical methods to analyze two-phase sampling studies, statistical methods to correct for participation bias in genetic association studies, and collaborative research in biomedical and ecological studies. She recently published her work on the novel two-phase sampling designs for studying binary outcomes in *Biometrics*. Professor Wang is passionate about both teaching and research. She enjoys interacting with students in her classroom.



ROBIN WILSON
Professor
Mathematics
Professor Robin Wilson earned his Ph.D. at the University of California, Davis. Prior to joining the faculty at LMU Dr. Wilson

served as Professor in the Department of Mathematics and Statistics at California State Polytechnic University, Pomona. Dr. Wilson has also been a Visiting Professor at Georgetown University and Pomona College. His scholarship includes both mathematics and the scholarship of teaching and

learning. His research in mathematics is in the field of low-dimensional topology where he is interested problems related to knots and surfaces in 3-manifolds, problems in spatial graph theory, and the Steinberg module of the braid group. Professor Wilson's work in mathematics education focuses on issues of equity and access for students of color in the K-12 and undergraduate mathematics classroom. Professor Wilson serves as Co-PI of the NSF funded Storytelling for Mathematics Learning and Engagement project that seeks to explore the impact of mathematics storytelling by mathematicians of color on K-12 teacher and student mathematics learning and engagement. In addition to his scholarship, Dr. Wilson is also active in the local community where he is a part of the Algebra Project network and works to support programs that promote math literacy in the Los Angeles Area.

School of Film and Television



WEIKO LIN
Associate Professor
Screenwriting

Professor Weiko Lin earned his M.F.A. in Film and Television and B.A. in English Creative Writing from UCLA.

Fluent in Mandarin, Weiko is a writer/producer and author who explore Asian diaspora and create global narrative content. Currently, he is developing two Disney Plus Asia original series and a feature biopic about an American flying ace of World War II with Oscar nominee Andrew Lazar attached to produce. He authored *CRAZY SCREENWRITING SECRETS: HOW TO CAPTURE A GLOBAL AUDIENCE* (Michael Wiese Productions, 2019) and its traditional Chinese edition 好萊塢劇本創作術 (Briefing Press, 2022). His past commissioned works include feature adaptation of New York Times best-selling memoir *RIVER*

TOWN by MacArthur Fellow Peter Hessler and a series pilot based on a Penguin YA novel for Super Deluxe. He has written projects for The Mark Gordon Company, Walt Disney Parks and Resorts, Ivanhoe Pictures/SK Global, Don Mischer Productions, and Wanda Pictures. He wrote the original story for and produced the Chinese romance film *100 DAYS 真愛 100 天* that world premiered at Hawaii International Film Festival and was an official selection at the 23rd Golden Rooster Hundred Flowers Film Festival in Mainland China. A Sundance Collab Advisor, he was Academy of Motion Picture Arts and Sciences Nicholl Fellowship Finalist and Samuel Goldwyn Writing Award recipient. Prior to LMU, he was a tenured Associate Professor of Screenwriting at Emerson College and has taught at Northwestern University, UCLA Film and TV Professional Program, and Taipei National University of the Arts as a Fulbright Senior Specialist. A current-active member of Writers Guild of America West, he previously served as co-chair of the guild's Asian American Writers committee. He is represented by Anonymous Content and United Talent Agency.

School of Education



CYNTHIA ALCANTAR
Associate Professor
Educational Leadership and Administration

Cynthia M. Alcantar is an Associate Professor and Director of the Higher Education

Administration program in the School of Education at Loyola Marymount University in Los Angeles (LMU). Prior to joining LMU, she was an Assistant Professor of Higher Education Leadership at the University of Nevada, Reno, and held postdoctoral fellowships from the Consortium for Faculty Diversity (2018-2019) and the Institute for Global-Local Action & Study (2017-2018) at Pitzer College. She earned a B.A. Liberal Studies with a concentration in Psychology, minor in Sociology from the University of California, Riverside, M.A. in Higher Education from Claremont Graduate University, and Ph.D. from the

University of California, Los Angeles in Social Science and Comparative Education. Her research focuses on the social structures that impact the social mobility and integration of racial/ethnic minoritized and immigrant populations in the United States. Particularly, the influence of schools (i.e., public K-20 schools, community colleges, and Minority Serving Institutions) on the educational pathways and civic participation of racial/ethnic minoritized and immigrant students. Her research has been published in *The Review of Higher Education*, *Teachers College Record*, *Journal of Diversity in Higher Education*, *Harvard Educational Review*, *Journal of Hispanic Higher Education*, *Qualitative Psychology*, and a co-edited book on race and education published through *Teachers College Press*.



CHRISTOPHER CORMIER

**Associate Professor
Teaching and Learning**

Professor Christopher J. Cormier earned his Ph.D. from the University of Illinois Urbana-Champaign in

Special Education. He also received a Master's in Education with emphasis in Psychology from Pepperdine University, a Master's in Theology from Fuller Theological Seminary, and a Bachelor of Science from Fisk University. Professor Cormier is a former special education teacher and has taught first through 12th in Title 1 schools in the Greater Los Angeles Metropolitan area. His research program focuses on the social and cultural contexts of minoritized learners and teachers in special education. Under this overarching theme, he has two lines of scholarship. The first is on the professional and socio-emotional lives of minoritized teachers. The second is on culturally informed identification of minoritized students in special education. Professor Cormier brings a comparative lens to both of his research lines with studies in national and international contexts. He is the current President of the Division for Culturally and Linguistically Diverse Exceptional Learners (DDEL)

of the Council for Exceptional Children and a Director-at-Large for Kappa Delta Pi Incorporated.



KENZO SUNG

**Associate Professor
Teaching and Learning**

Kenzo Sung earned his B.A. in Integrative Biology from the University of California at Berkeley, Ed.M. in Teaching and Learning from Harvard University, and Ph.D. in Education Policy and Social Cultural Studies in Education from the University of California at Berkeley. Prior to joining LMU, Professor Sung was recently awarded tenure at Rowan University where he served as an Assistant Professor of Urban Education and Ed Foundations, and affiliated faculty with Africana Studies and American Studies. Professor Sung's research has been shaped by his years attending and teaching in urban public schools, and include education policy and leadership, urban education, bilingual education, critical race theory, ethnic studies, political economy, and history of education. He has published in various journals including *Race Ethnicity and Education*, *Peabody Journal of Education*, and *Bilingual Research Journal* as well as chapters in *Handbook of Urban Education*, *Race and Urban Communities*, and *Research Methods for Social Justice and Equity in Education*. Professor Sung previously was an Andrew Mellon postdoctoral fellow at Wellesley College, and has been awarded funding from the Ford Foundation, Spencer Foundation, Mellon Foundation, University of Cambridge, and Rockefeller Brothers Fund. His current and prior service include as Secretary for the Critical Race Studies in Education Association, Communications Director for AERA Division G, and on journal editorial boards for *Race Ethnicity and Education*, *International Studies in Sociology of Education*, *Educational Policy Analysis Archives*, and *Journal of Urban Learning, Teaching, and Research*. Professor Sung started as a youth organizer and worked as a public middle school teacher in Oakland, CA prior to entering academia.

Term Faculty

Bellarmino College of Liberal Arts



IRIS BLAKE

Visiting Assistant Professor *Women and Gender Studies*

Professor Iris Blake (she/they) received her Ph.D. in Ethnic Studies from the University of California, Riverside. She

earned her M.M. in Ethnomusicology from the University of Texas at Austin and her B.A. in Music and French from Arizona State University. Most recently, they were a UC President's Postdoctoral Fellow at the University of California, Los Angeles, where they were affiliated with the Department of Musicology. Their research interests include critical race sound studies, performance studies, transnational and decolonial feminist theories, disability studies, and embodiment. She has published in the journal *Performance Matters* and is currently working on her first book project. This project interrogates how coloniality has shaped knowledge about the voice and analyzes contemporary multimedia works that engage embodied performance, visual art, and speculative fiction as alternative archives for voicing and listening.



CASSIE COMLEY

Visiting Assistant Professor *Sociology*

Professor Cassie Comley (she/her) earned her B.A. in Psychology from California State University, Long Beach, and her M.A. in

Sociology from the University of Oregon. She received her Ph.D. in Sociology and Graduate Certificate in Women's, Gender and Sexuality Studies from the University of Oregon. Professor

Comley's research broadly focuses on intersectionality, sociology of gender, critical race theory, and sociology of sport. Specifically, her work focuses on Latinx communities' participation in sports and the ways in which their experiences intersect with racialized and gendered barriers to accessing lifestyle sports. Additionally, Professor Comley works closely with incarcerated youth and is currently working on new research focusing on if sport can serve as a vehicle for social mobility of formerly incarcerated youth. She is excited to return to the Loyola Marymount community as a Visiting Assistant Professor in the Department of Sociology.



MALCOM FRIERSON

Visiting Assistant Professor *African American Studies*

Professor Malcolm Frierson earned his Ph.D. in African American History from

the University of Memphis. His research centers on the politics of culture in the African American experience. *Freedom in Laughter*, his nonfiction study of African American comedy during the Civil Rights Movement, won a nomination for the 2021 MAAH Stone Book Award. His two novels, *A Place in the World* and *Finding Jamaica*, explore African Diaspora themes. Professor Frierson is currently researching Dick Gregory's human rights activism and completing a novel on the Black Lives Matter Movement. He most recently taught in the Department of History at the University of Oregon.



CHRIS JACKSON

Visiting Assistant Professor *Political Science and International Relations*

Professor Chris Jackson earned his B.A. in History from Centre College and his M.A. in

International Studies from the University of Illinois, Urbana-Champaign. He earned his Ph.D. in Political Science from Georgia State University with concentrations in International Relations and Comparative Politics. His research focuses on the role of subnational groups in international negotiations, mediation, and peacebuilding. He has conducted

internationally funded field research in Cyprus, Kosovo, Macedonia, and Serbia and his research has been published in the *Journal of European Integration*, *Ethnopolitics*, and *Civil Wars*.



ALEXANDRO JARA
Assistant Professor
Chicana/o & Latina/o Studies
Professor Alexandro J. Jara earned his B.A. in Latin American History with an

Urban Education minor from Santa Clara University. He worked as an elementary and middle school teacher before pursuing his M.A. and Ph.D. at the University of New Mexico. His dissertation, ““Do You Know the Way to San Jose?” Ethnic Mexicans, Urbanism, Culture, and Politics in the Emerging Silicon Valley, 1940-1980,” examines the (sub)urbanization of Northern California’s largest municipality, its impact on the Latino population, and the group’s contributions to social, cultural, and political activity in the city. Professor Jara worked as an adjunct instructor in the Department of History at Santa Clara University while finishing his dissertation. He is in the process of drafting an article for submission to the *Journal of Urban History*.



VICENTE MUNOZ REJA
Visiting Assistant Professor
Philosophy
Professor Vicente Muñoz-Reja earned his Ph.D. in philosophy from Boston College,

supported by a Fulbright fellowship, and his B.A. and M.A. in Philosophy and History in Universidad Autónoma de Madrid (Spain). He has taught at Babson College and at several universities in Spain, and has acted as visiting researcher at Köln (Germany), Warwick (UK), and Panthéon-Sorbonne (France). His research focuses on post-Kantian European philosophy, especially classic phenomenology. He also works on Latin American and Iberian philosophies. He is co-editing the upcoming volume *Phenomenology, Ontology, Metaphysics* for Brill, which results from his work as convenor of the Boston Phenomenology Circle.



ANTHONY PALMISCNO
Assistant Professor
Modern Languages & Lit/ Spanish
Professor Anthony Palmiscno earned his Ph.D. in Iberian Studies from The Ohio State University, focusing on Iberian

contemporary popular culture studies. His primary research interests include the performance of identity and cultural branding through food and wine in the Spanish autonomous community of La Rioja, and how such gastronomic expressions sustain regional identity within the larger context of Spain and neighboring Basque peripheries. His work primarily interrogates consumption in bars, wine festivals, and other gastronomic spaces of conviviality. Other academic interests include representations of food and wine in contemporary Spanish literature, language pedagogy, technology-enhanced learning in the foreign language classroom, and performance pedagogy to foster spaces of safety within the classroom and community. He recently co-edited the volume *Kindred Spirits: Representations of Alcohol in Literature and Culture* with Jose Diaz Cuesta.



MICHAEL PATZIA
Visiting Assistant Professor
Philosophy

Professor Michael Patzia grew up in Vancouver, B.C. Canada and spent his high school and college years in the U.S. After receiving his Ph.D. in philosophy from Vanderbilt University in 2000, he began his full-time teaching career in Nicaragua as an Assistant Professor of Philosophy at Ave Maria College of the Americas. Eventually he ended up at Central College in Pella, IA where he became an Associate Professor of Philosophy. Due to some family circumstances, he resigned his position and relocated to Southern California with his son in 2014. Since then, he has been teaching philosophy at Loyola Marymount University in an adjunct capacity as well as teaching humanities courses at the Coburn School. In 2020-2021, he was a Visiting Assistant Professor of Philosophy at LMU. His academic

interests have been primarily focused on Ancient Greek Philosophy, Asian Philosophy and Ethics, and he has published articles on Anaxagoras, Xenophanes, and Plato. Professor Patzia also plays upright bass professionally all over the region and he is an avid golfer.



MARIA PIZZANO
Visiting Assistant Professor
Psychology

Professor Maria Pizzano earned her B.A.s in Psychology and in Molecular Cell Biology

from the University of California at Berkeley. She began working with children and families with autism spectrum disorder (ASD) upon completion of her degrees and returned to school to study interventions to improve the lives of those with ASD. She completed her M.A and Ph.D. under the advising of Dr. Connie Kasari in the Education department at the University of California, Los Angeles. Professor Pizzano teaches courses in the department of Psychology. She has continued to work with families impacted by ASD and other neurodevelopmental disorders, both in-person and remotely, to deliver training, teaching, and assessments. Her research focuses on individualizing supports for those with ASD, particularly children who are low-frequency communicators.



HANNAH SAWYERR
Visiting Assistant Professor
English

Hannah V. Sawyer is a Sierra Leonean-American writer with a passion for people and storytelling.

Her spoken word has been featured on the British Broadcasting Channel's (BBC) "World Have Your Say" program, as well as the National Education Association's "Do You Hear Us?" campaign. Her written word has been featured in publications such as gal-dem, ROOKIE and Sesi Mag. She holds a B.A. in English from Morgan State University and an MFA in Creative Writing from The New School.

Her debut novel, CALL HIM BY NAME, told through court transcripts, journal entries, and poetry is forthcoming from Abrams/Amulet in Fall 2023.



MARY SEABROOK-DERRINGTON
Visiting Assistant Professor
Psychology

Professor Seabrook-Derrington earned her M.A. in Counseling Psychology with a Marriage, Family, and Child Counseling specialization and her Ph. D. in Counseling, Clinical, and School Psychology from the University of California, Santa Barbara. She is a licensed psychologist and previously practiced at the Center for Adolescent and Family Care in Texas, the Child Guidance Clinic in Santa Barbara, the Center for Adolescent and Family Care Medical Group in Dana Point, and the Center for Family Therapy in Newport Beach. While practicing in Texas, she maintained privileges at several psychiatric hospitals, and she also served as a predoctoral intern at the Long Beach VA Medical Center. Her research interests include divorce, the effects of divorce on children, and social cognitive theory. Professor Seabrook-Derrington is no stranger to LMU, where she began teaching in 1999 as a Visiting Assistant Professor of Psychology and has consistently served as a lecturer/senior lecturer since that time. She has taught various courses at LMU including general psychology, life span development, social psychology, personality, abnormal psychology, and psychology of marriage. Before coming to LMU, Dr. Seabrook-Derrington taught as an Adjunct Professor and as a Visiting Assistant Professor of Psychology at Pepperdine University's Graduate School of Education and Psychology.



ZOE SLATOFF
Clinical Assistant Professor
Yoga Studies

Zoë Slatoff has a Ph.D. in Religion and Philosophy from Lancaster University and an M.A. in Asian Languages and Cultures from Columbia University. She is delighted to be teaching Sanskrit and Yoga Philosophy in the Yoga Studies M.A. Program here at LMU. Zoë is the

College of Business Administration

author of “Yogāvatāraṇam: The Translation of Yoga,” a Sanskrit textbook based on classic yoga texts, from which she created a comprehensive series of Sanskrit courses for the Oxford Centre for Hindu Studies. She also taught yoga and Sanskrit for many years at her yoga shala in her hometown of NYC, Ashtanga Yoga Upper West Side. You can read more on her website:

www.ashtangayogasanskrit.com



LAUREN SMART

**Visiting Assistant Professor
English and Journalism**

Lauren Smart is a visiting assistant professor of journalism. She joins the LMU faculty after teaching for five years at Southern

Methodist University in Dallas, where she worked as an arts writer and critic for the Dallas Morning News. She has also published work in American Theatre magazine, Arts & Culture Texas, D Magazine, Charleston Post & Courier and Syracuse Post Standard. She is the critic in residence for the Shreveport Regional Arts Council and has been a critic fellow at the Chautauqua Institution and the O'Neill Theater Center.

GEORGE SARRAF

**Visiting Assistant Professor
Economics**

Professor George Sarraf earned his Ph.D. in Economics and Management (finance) from Claremont Graduate University and his M.A. in Political Economy from Sydney University. Prior to teaching, Professor Sarraf has had an extensive business experience ranging from IT consulting work to business consulting.



INGRID GREENE

**Clinical Assistant Professor
Management**

Ingrid Greene earned her Bachelor of Civil Engineering from Villanova University and her M.B.A. in International

Business from The Thunderbird School of Global Management. She subsequently earned her M.A. in Strategic Communications from Pepperdine University.

At LMU, Professor Greene teaches Business Ethics and Sustainability and is the newly appointed Academic Director for The Master in Global Entrepreneurial Management program whose partner schools include IQS School of Management in Barcelona, Spain and FuJen Catholic University in Taipei City, Taiwan. In her prior academic experience, she taught Organizational Behavior at Pepperdine University and Communications at Compton College.

Her earlier professional experience as a Communications Consultant/Business Analyst encompasses work for Citigroup's Technology and Global Engineering Group, Credit Suisse, Salesforce.com, The Wonderful Company, and The Clark Construction Group. She also initiated the entrepreneurial production and distribution of two yoga DVDs in the international market.



CANDICE MARGIOTTA

**Clinical Assistant Professor
Accounting**

Professor Candice Margiotta earned her B.S. and M.S. in Accounting from our very own Loyola Marymount University.

Professor Margiotta began her accounting career in public accounting as an auditor for Deloitte & Touche. She then transitioned into private

accounting where she served as an Assistant Controller for a growing digital media company. She is a licensed Certified Public Accountant in the State of California.



ANNA PAPAZIAN
Clinical Assistant Professor
Finance

Anna Papazian, Clinical Professor of Finance, leads a team that provides Fractional CFO services to middle-

market companies. Her company, K Buildz Consulting, is certified as a woman-owned business by multiple agencies such as WBENC and the State of California. Anna earned her M.B.A. in Finance from USC, Marshall School of Business. She also holds a B.A. in Business Economics from UCLA. She is certified in Lean Six Sigma and earned Toyota's Master Kaizen Coach designation.



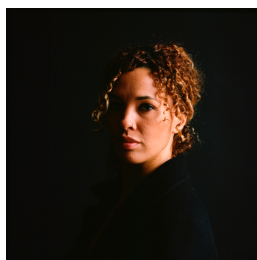
KELLY WATSON
Clinical Assistant Professor
Executive MBA

Kelly Watson is Managing Partner of Orange Grove Consulting and has spent more than 20 years as an accomplished operations

and organizational development consultant. Kelly's clients have included Oracle and Toyota, as well as Skillsoft and Linkage, for whom she has designed women's leadership curriculum. Kelly is an adjunct professor at Loyola Marymount University and is co-author of the book, *The Orange Line: A Woman's Guide to Integrating Career, Family, and Life*. Her upcoming book on building inclusive workplaces will be published Fall 2020. Prior to consulting, Kelly served as Vice President, Marketing for Telecom New Zealand USA and has held other senior operational roles. Kelly holds a B.A. in Political Science from the University of Western Ontario in London, Canada and an M.B.A. from Loyola Marymount University in Los Angeles. Kelly is a Recreation & Parks Commissioner for the City of El Segundo, CA.

Outside of work, Kelly helps women and girls reach their full potential through AYSO coaching, refereeing, and playing soccer. She also serves on several non-profit boards.

College of Communication and Fine Arts



JANESSA CLARK
Artist in Residence
Dance

Janessa Clark, a Visiting Assistant Professor of Dance, is a BESSIE Award nominated choreographer, dance filmmaker, performer, and

installation artist. She holds an M.A. in Performance Practices and Research from the Royal Central School of Speech and Drama in London and a BFA in Choreography from Arizona State University. Her practice combines dance, video, and language to create socially engaged art for stage, screen, and site-specific environments.

Janessa directed the New York-based dance collective, Janessa Clark/KILTERBOX, from 2001-2012 and nomadthenewcompany, in Stockholm from 2012-2018. She has been an artist in residence through CEC ArtsLink's Back Apartment Residency in St. Petersburg, Russia, Exploring the Metropolis at the Jamaica Arts Center, and at THE VISIONARY in upstate New York. Janessa's films and live works have been presented widely over the past 20 years including at HERE Arts Center, Danspace Project, and Dixon Place in New York, the Barry Art Museum, the American Dance Festival, Bates Dance Festival, Teatro Victoria (Canary Islands), Vitruvian Thing (Greece), SDVIG (Russia), and Danscentrum (Sweden). Her video dance project, COMMUNION, a response to the Covid-19 crisis was nominated for the 2021 BESSIE Award for Outstanding Production.

As a dancer, Janessa has been fortunate to collaborate with Tino Sehgal, Gibney Dance, Laura Peterson Choreography, and Noemie LaFrance among others, and she has received grants from Foundation for Contemporary Arts, the Swedish Arts Council, the Croft Residency, and Harlem Stage. Prior to LMU, Janessa was on faculty at the Massachusetts Institute of Technology and has also been a guest artist at New York University's Summer Dance Festival, the College at Brockport, Old Dominion University, Montclair State University, and internationally at the University College of Dance/DOCH, Balletakademien, and Luleå Tekniska Universitetet in Sweden. She is thrilled to be at LMU this fall.

Seaver College of Science and Engineering



**LUCIANO ENZO MANFREDI
CONSOLE**

**Visiting Assistant Professor
Mathematics**

Professor Luciano Enzo Manfredi Console earned his double degree, B.S. in Pure

Mathematics and B.S. in Physics, from Loyola Marymount University. Later, he received his Masters of Advanced Studies in Pure Mathematics from the University of Cambridge. He published "Quasinormal Modes of Modified Gravity (MOG) Black Holes" and "Horizon Wavefunction of Generalized Uncertainty Principle (GUP) Black Holes", and presented his research at various national and international conferences. Upon completing his master, he has been a part-time lecturer in the Mathematics departments at Loyola Marymount University.



WEI-CHUNG (WAYNE) HUNG
**Visiting Assistant Professor
Chemistry and Biochemistry/
Environmental Science**

Professor Wayne Hung (he/his/him) earned his B.E. in Chemical Engineering and B.S.

in Geography from National Taiwan University. He received his M.S. and Ph.D. in Civil and Environmental Engineering from the University of California, Los Angeles. His research interests lie in the intersection of environmental chemistry and microbiology. Specifically, his doctoral research focused on the prevalence and fate of metal(loid)s and antibiotic resistance in the environment and their corresponding microbial ecology. Prior to joining Loyola Marymount University, he was a postdoctoral scholar at the University of California, Los Angeles. His postdoctoral projects helped understand the impacts of urbanization on antibiotic resistance in surface waters as well as the impacts of environmental antibiotic resistance on the human microbiome. During his postdoctoral training, Professor Wayne Hung served as a part-time lecturer in the Environmental Science program at Loyola Marymount University where he taught Principles of Environmental Sustainability. In addition to research and teaching, he is passionate about pedagogy research to address issues of inclusivity and diversity in STEM education.



DAVID QUAM
**Clinical Professor
Healthcare Systems Engineering**

Professor David A. Quam earned his MD degree at the University of California, Irvine College of Medicine, his Master of Science

degree in Physiology at the University of California, Davis, and his Bachelor of Science degree in Biology from Loyola Marymount University. Prior to his return to LMU to join the faculty, he practiced family medicine and held various executive leadership positions with Kaiser Permanente in southern California, including Area Medical Director and Assistant Executive Medical Director. In those roles, he was responsible for the healthcare delivery for

millions of KP members. Following his retirement, he and his wife opened a small restaurant in San Clemente which earned the #13 spot in Yelp's Top 100 Places To Eat in the US in 2020. When COVID hit, Dr. Quam was tapped by the State of California to direct the opening and serve as medical director of the Los Angeles Surge Hospital, which served as an overflow COVID hospital for the impacted hospitals in the LA area in the early months of the pandemic. At LMU, Dr. Quam is director of the Healthcare Systems Engineering Master's program which educates students on a Lean Systems Engineering approach to decrease fragmentation and improve safety and quality in healthcare. His current interests include exploring how systems, technology, architecture and community influence the equitable and evidence-based delivery of healthcare in the US. He also holds the title of unapologetic coffee snob and expert barista.

School of Film and Television



DAVID PARRISH
Clinical Assistant Professor
Production/ Cinematography

For over 35 years, David Parrish has had the good fortune to work as a Cinematographer, Camera Operator, and Camera

Assistant on a wide variety of feature films, television, commercials, and music videos. He has shot 16, 35, and 65mm films, including one in 3-D. David was an active participant in the transition to digital cinema cameras. Professor Parrish's work has taken him around the world, allowing him to collaborate with many talented people in front of and behind his camera. David now brings his passion for Cinematography into the classroom. David shares LMU's commitment to a diverse and inclusive filmmaking community. A diversity of ideas, passions, and people, of which we as

teachers, hold the awesome responsibility to celebrate, inspire and empower. Our world needs to see our student's vision and hear their stories. Since 2018, Professor Parrish has been a Lecturer at LMU: School of Film and Television and an Adjunct Professor at USC: School of Cinematic Arts. He received his M.A. in Film Production at The University of Iowa, production training at Istituto di Stato per la Cinematografia e la Televisione in Rome, and his B.A. from The Evergreen State College with an emphasis in film production. David is a member of the International Cinematographers Guild ICG, the Society of Camera Operators SOC, and the Digital Cinema Society DCS. His credits include FEATURES - Beetlejuice, Christmas Vacation, Dodgeball, The Notebook, Balls of Fury TV - Brothers and Sisters, Star Trek: Voyager and Enterprise, House M.D. Without a Trace, Party of Five COMMERCIALS - Apple, United Airlines, Pontiac, Chevrolet, Toyota, Coca-Cola, Budweiser, Corona, McDonald's, Revlon, Disneyland MUSIC VIDEOS - Bob Dylan, Fleetwood Mac, Stevie Nicks, Billy Joel, Michael Jackson, Pat Benatar, Prince, Tina Turner, Danny Elfman, Duran Duran, and Maroon 5.



MATTHEW SHEEHAN
Clinical Assistant Professor
Animation

Matthew B. W. Sheehan (Clinical Assistant Professor, Loyola Marymount University

Department of Animation, School of Film and Television) is a storyteller and creative living in Los Angeles. His educational credentials include an M.F.A. in Animation from the University of California Los Angeles' School of Theatre, Film, and Television, a B.A. in Animation and Visual Effects from the University of Southern California's School of Cinematic Arts, and an A.A. in Fine Art from Santa Monica College. He was a 2020 and 2021 Matt Groening Production Fellowship in Animation recipient, a 2020 Card Walker Motion Picture Fellowship recipient, a Grand Prize recipient for the 4th Annual Don Thompson LGBT Film Festival a Santa Monica College Arts Mentor program alum, a 2020 Writer's Guild Foundation Veterans Writing Project

alum, a member of MENSA America, and is a member of the neurodiverse community and an LGBTQ+ Marine Corps veteran.



STACY SPRUILL
Clinical Assistant Professor
Screenwriting

Professor Stacy Spruill watched an ungodly amount of television as a child and her parents are relieved, albeit *stunned*, that their sky-high cable bills actually paid off. Stacy is a showrunner, writer, and film director who has sold pilots and movies. She uses universal themes to craft culturally specific stories and has written for notable Hollywood talent, and on multi-camera and single-camera series airing on streaming networks. Professor Spruill earned a double major B.A. in African American Studies and Media Studies from U.C. Berkeley and obtained a M.F.A. in Screenwriting at The AFI Conservatory. She began her career as a writer-director of indie short films which screened in over 40 film festivals worldwide, from Cannes to Toronto to East L.A. to Zimbabwe, winning a few coveted awards along the way. She was hand-picked for Ryan Murphy's Director Shadow Program at Fox; IDG Media's China Story Fellowship; Warner Bros. Television Writers' Workshop; and Tribeca Film Festival All Access. She is currently developing two pilots.



JONATHAN WYSOCKI
Clinical Assistant Professor
Film and Television Production

Jonathan Wysocki is a queer independent filmmaker whose award-winning debut feature, *Dramarama*, is now streaming on Hulu and is distributed internationally. He is a Sundance Screenwriters and Directors Labs Fellow as well as an Advisor for Sundance Co//ab. Wysocki's 5 award-winning short films include *A Doll's Eyes*, which screened at 50 festivals on 6 continents and was translated into 8 languages. Film accolades include the Sundance Lynn Auerbach Screenwriting Fellowship, the Busan

Cinephile Award, the Stanley Kramer Award, the James Bridges Award, and two Annenberg Grants. He has written about his biographical approach to filmmaking in *The Advocate* and *Talkhouse*. Previously, Wysocki worked as a feature programmer for the LA Film Festival, as a producer on the indie features *The Hammer* and *Thrasher Road*, and for major studios such as MGM and ABC. Wysocki holds a B.A. in Theater and an M.F.A. in Film and Television from UCLA. He is also a Project Involve Fellow at Film Independent and a Berlinale Talents alum. Academic appointments include Visiting Assistant Professor at Occidental College as well as Lecturer at Chapman University and Cal State Long Beach.

School of Education



KEISHA GOOSBY
Clinical Assistant Professor
Teaching and Learning

Keisha Chin Goosby (she/her) is a Clinical Assistant Professor and Director of the General Education Intern credentialing program in the Department of Teaching and Learning. She earned a B.A. in Sociology at the University of California, Los Angeles, a M.A. in Secondary Teaching at the University of Southern California, and a Ph.D. in Education at Claremont Graduate University (CGU). Her career in education includes elementary and secondary teaching in Los Angeles and the Inland Empire. While earning her Ph.D., she taught and mentored secondary teachers in the M.A./credential program at CGU. Prior to joining LMU, she was a Training Director and the Associate Director of an undergraduate research training program at California State University Long Beach. Her research focuses on the educational experiences of undocumented, immigrant, and historically excluded students and the impact that mentors have upon them. As a scholar practitioner, she strives to be a critical, anti-racist mentor and educator who advocates for excluded students. She enjoys working with and learning from her students.



DAWN RICHARDS

Clinical Assistant Professor
Specialized Programs in Professional Psychology

Professor Dawn Richards earned her B.A. in Psychology from University of California,

Riverside and her M.A. in Clinical Psychology from Azusa Pacific University. She earned her Psy.D. in Educational Psychology at Alliant International University where she published her doctoral project titled, “The Importance of Secondary School Transition as it Relates to the Future Success of Students with Disabilities.” Professor Richards is also a Licensed Educational Psychologist and Diplomate of School Neuropsychology.

Not pictured Term:

ALEXANDER DIONES

Visiting Assistant Professor
Political Science

ALANA FAAGAI

Visiting Assistant Professor
English

RHEMA JOHNSON

Visiting Assistant Professor
Chemistry and Biochemistry

MUSTAFA MOZAEI

Visiting Assistant Professor
Mechanical Engineering

OMAR RAMOS

Clinical Assistant Professor
Theatre Arts and Dance

RAJIV UTTAMCHANDANI

Visiting Assistant Professor
Physics

ERIC YOUNG

Instructor
Economics



Office of Faculty Affairs
University Hall
1 LMU Drive, Suite 4820
Los Angeles, CA 90045-2659
Email: ofd@lmu.edu